

Straight Waveguide Sections

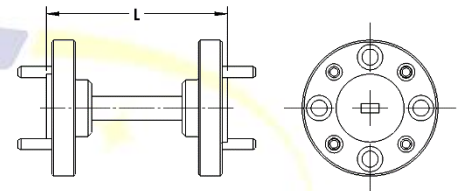
Summary:

Straight sections are an essential piece of our catalog and are available in WR3 to WR42 sizes. Special care is exercised to ensure accuracy with respect to the center line of the waveguide when attaching the flanges. WR10-42 Straight Sections can be ordered in 1 or 2-inch length. Electroformed units offer better RF performance. Sizes WR3 and WR4 are coin silver, sizes WR5 and up are copper. Electroformed sizes below WR3 are also available upon request.



Ordering Example:

ST42S-2.0 is a straight section in WR42 with square flanges and 2" length. ST8RE-1.0 is a straight section in WR8 electroformed with round flanges and 1" length.



Part Name	RF Specifications			Mechanical Specifications				
	WR	Frequency (GHz)	Insertion Loss (dB)	A DIM (in)	B DIM (in)	Length (in)	Flange	Comment
ST42S-2.0	42	18 - 26.5	0.025	0.4200	0.1700	2	S 0.875	Copper
ST28S-2.0	28	26.5 - 40	0.04	0.2800	0.1400	2	S 0.750	Copper
ST22R-2.0	22	33 - 50	0.06	0.2240	0.1120	2	R 1.125	Copper
ST19R-2.0	19	40 - 60	0.07	0.1880	0.0940	2	R 1.125	Copper
ST15R-2.0	15	50 - 75	0.1	0.1480	0.0740	2	R 0.750	Copper
ST12R-2.0	12	60 - 90	0.15	0.1220	0.0610	2	R 0.750	Copper
ST10R-2.0	10	75 - 110	0.18	0.1000	0.0500	2	R 0.750	Copper
ST42S-1.0	42	18 - 26.5	0.0125	0.4200	0.1700	1	S 0.875	Copper
ST28S-1.0	28	26.5 - 40	0.02	0.2800	0.1400	1	S 0.750	Copper
ST22R-1.0	22	33 - 50	0.03	0.2240	0.1120	1	R 1.125	Copper
ST19R-1.0	19	40 - 60	0.035	0.1880	0.0940	1	R 1.125	Copper
ST15R-1.0	15	50 - 75	0.05	0.1480	0.0740	1	R 0.750	Copper
ST12R-1.0	12	60 - 90	0.075	0.1220	0.0610	1	R 0.750	Copper
ST10R-1.0	10	75 - 110	0.09	0.1000	0.0500	1	R 0.750	Copper
ST8R-1.0	8	90 - 140	0.15	0.0800	0.0400	1	R 0.750	Copper
ST6R-1.0	6	110 - 175	0.2	0.0650	0.0325	1	R 0.750	Copper
ST5R-1.0	5	140 - 220	0.3	0.0510	0.0255	1	R 0.750	Copper
ST4R-1.0	4	170 - 260	0.35	0.0430	0.0215	1	R 0.750	Coin silver
ST3R-1.0	3	220 - 325	0.5	0.0340	0.0170	1	R 0.750	Coin silver
ST8RE-1.0	8	90 - 140	0.15	0.0800	0.0400	1	R 0.750	Electroformed
ST6RE-1.0	6	110 - 175	0.2	0.0650	0.0325	1	R 0.750	Electroformed
ST5RE-1.0	5	140 - 220	0.3	0.0510	0.0255	1	R 0.750	Electroformed
ST4RE-1.0	4	170 - 260	0.35	0.0430	0.0215	1	R 0.750	Electroformed
ST3RE-1.0	3	220 - 325	0.5	0.0340	0.0170	1	R 0.750	Electroformed



Custom Microwave Inc
custommicrowave.com
24 Boston Ct – Longmont, Colorado
303-651-0707